



AB109 Realignment Monthly Stats May 2015

Post-Release Community Supervision (PCS)

Releases from Prison

from 10/1/11 - 5/31/15 = 5040

2015 YTD = 363

2015 Monthly Avg = 73

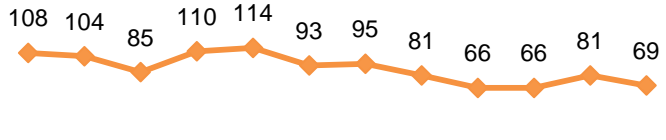
2014 Monthly Avg = 96

Currently Supervised:

Actively Supervised	1344
On Active Warrant (includes 276 ICE warrants)	560
Total	1904

Completions:

1 Yr Mandatory Termination	1699
Other Discharges/Transfers	1437
Total	3136



Jun Jul Aug Sep Oct Nov Dec Jan '15 Feb '15 Mar '15 Apr '15 May '15

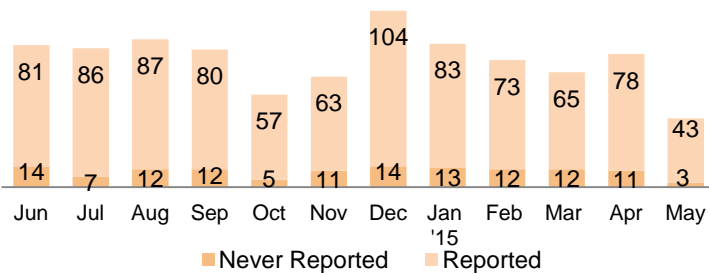
*Based on CDCR's projected release dates and are subject to change. Numbers reflect the most current release date information.

Warrants

2015 YTD = 393

2015 Monthly Avg = 79

36.19% of individuals had at least one warrant issued since 10/1/2011.

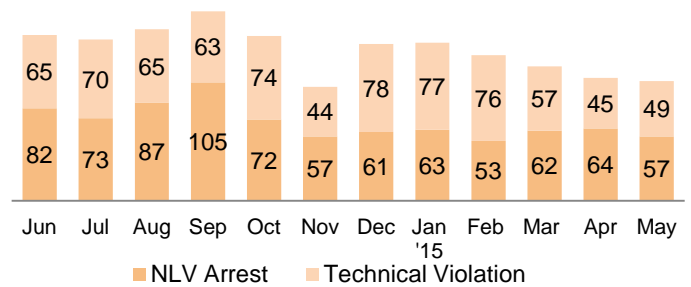


Revocations

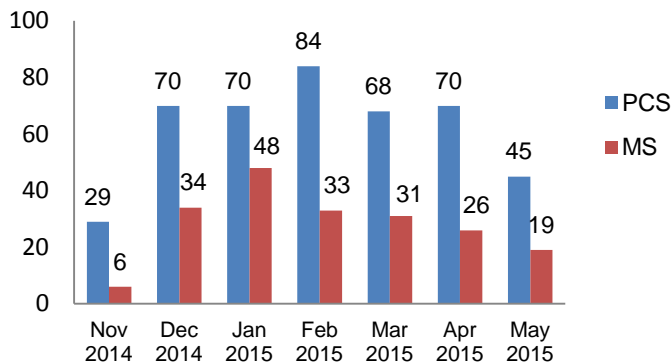
2015 YTD = 603

2015 Monthly Avg = 121

39.40% of individuals had at least one revocation issued since 10/1/2011.



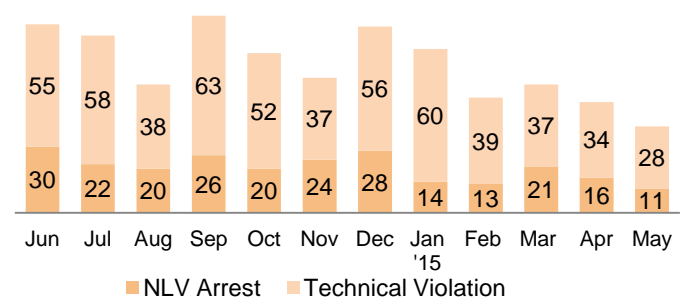
Prop. 47 Terminations



Flash Incarcerations

2015 YTD = 273

2015 Monthly Avg = 55



Mandatory Supervision (MS)

Individuals with MS Convictions

from 10/1/11 - 5/31/15 = 2567

2015 YTD = 172

2015 Monthly Avg = 34

2014 Monthly Avg = 58

Currently Supervised:

Actively Supervised (Released from Jail)	565
On Active Warrant as of May 31, 2015	292
Total	857

Awaiting Supervision:

Sentenced (still in custody)	219
------------------------------	-----

Completions:

MS Case Terminated/Expired/Other	1491
----------------------------------	------

